

# FAQ Frequently Asked Questions

Visit FAQ page on Copic official website  
<https://copic.jp/en/support/>

## Do you have any recommended type of Copic for beginners?

We recommend Copic Ciao markers for beginners. Our best pick for beginners is the Ciao 24 colors set, a well-balanced set that contains all the starter colors.

## What is the difference between Sketch and Ciao?

Sketch is the standard marker and Ciao is the beginner marker in Copic family. Sketch has more colors and holds more ink. Ciao has a more attractive price but they need to be refilled sooner and has the least color options. You can airbrush with Sketch but Ciao is not ABS (airbrushing system) compatible. Both have replacement nibs and the quality of ink is completely the same.

## Is it allowed to take Copic Ink and/or Air Can as a carry-on onto a plane?

Since Copic Ink is combustible liquid, it is prohibited from carry-on and checked baggage by Aviation Law. This aviation law is also applied to aerosol cans containing compressed gas, but it is allowed as checked baggage. 2kg per person (almost the same amount as 30pcs of D60N Air Can) is allowed on the plane as checked baggage. For further information, please contact airline company or Japan Civil Aviation Bureau (a division of the Ministry of Land, Infrastructure, Transport and Tourism).

## How do I get Copic Ink off my hands?

Copic ink is a dye ink. It takes some time to remove dye stains from the skin completely. Try regular soap and warm water first to see how much of it you can get off. You may use cleansing milk, oil-based makeup remover or #0 Colorless Blender.

## What should I do if Copic Ink spills on my clothes?

Copic ink is alcohol-based dye ink and cannot be easily removed from fabric. We strongly recommend that you seek the advice of a dry-cleaner's shop.

## What is the most appropriate storage method for Copic marker and Copic ink?

You should store your Copic marker and Copic Ink in a dark and cool place and avoid exposing them to direct UV sunlight and high temperatures.

## How should I store my markers? Horizontally or vertically?

It would make no difference whether you store your markers either upright or on the side as long as the ink is nearly filled. However, when the ink amount has decreased, we recommend you store your Copic markers horizontally so that the ink saturates evenly on both nibs. In our pre-made sets, we place markers with the super brush nib side up.

## Could you tell me the size of the area I can color with a single marker?

The average number of B4 size (257mm x 364mm) paper you can color when painting the whole area evenly with the Broad nib is:  
 Sketch: Approx. 3.7 sheets    Classic: Approx. 5 sheets  
 Ciao: Approx. 2.7 sheets    Wide: Approx. 9 sheets

## What is the difference between 100 Black and 110 Special Black?

100 Black is a slightly bluish black that fits with the Cool Grays. On the other hand, 110 Black is closer to a bit reddish and fits its closer to "ink black" or "deep black" and goes well with the Neutral Grays. The difference between these two blacks is very subtle but the blending of 100 black is deeper.

## English Version

# COPIC

**358**  
colors

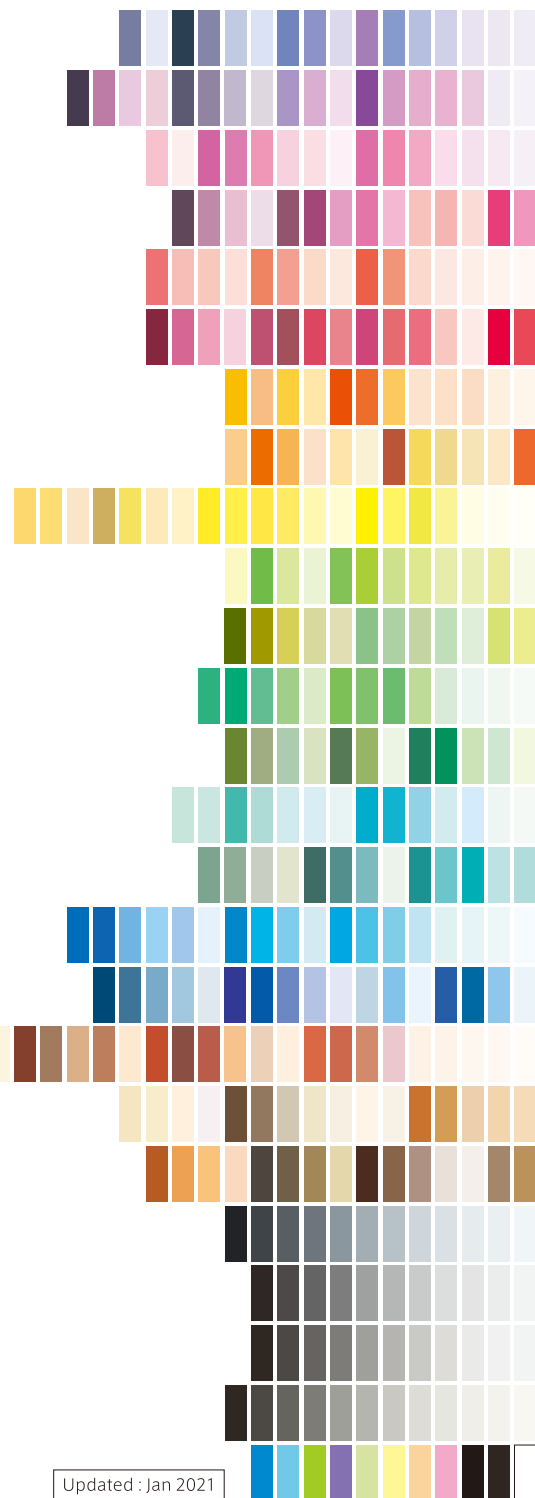
copic sketch

**180**  
colors

copic ciao

**214**  
colors

copic classic



Updated : Jan 2021

Comparison by type of Copic	COPIC sketch	COPIC ciao	COPIC classic	COPIC WIDE
Shape	Oval	Round	Square	Wide oval
Number of colors	358 colors	180 colors	214 colors	
Original Marker (empty marker without ink)	○	×	○	○
Refillable with Copic Ink	○	○	○	○
Times you can refill with a bottle of Copic Ink	Approx.7 times	Approx.9 times	Approx.5 times	Approx.3.5 times
Rough indication amount per refill	Approx.1.8ml	Approx.1.4ml	Approx.2.5ml	Approx.3.5ml
Refill amount for Copic Original (empty marker)	Approx.3ml		Approx.4ml	Approx.6ml
Nib replacement	○	○	○	○
Types of nib (★= Standard nib)	★Super Brush ★Medium Broad Sketch Fine	★Super Brush ★Medium Broad	★Standard Fine Super Fine Semi Broad Calligraphy 3mm ★Standard Broad Soft Broad Calligraphy 5mm Round Brush	★Extra Broad
Compatibility with Copic Airbrushing System (ABS)	○	×	○	×

## The highest quality markers

Copic markers were developed back in 1987 and are now distributed in more than 70 countries and receiving international acclaim. These versatile markers are popular in a wide range of fields: commercial design, comics/manga, illustration, caricature, card-making, and model kits painting. Copic markers are also used in activities at care centers and nursing homes, bringing creativity to many people regardless the age.



- IMPORTANT:**
- Copic ink dries quickly. Always replace the cap after use.
  - To make sure the ink does not bleed through onto your workplace, we recommend working with a piece of paper under your artwork.
  - Copic is long-life, economical marker system. All types of Copic are refillable, have replaceable nibs.

**CAUTION:**  
 Please avoid displaying your Copic artworks in direct contact with the wall because a chemical reaction of the dye-based Copic ink with plasticizers contained in vinyl (such as PVC) could cause bleed-through.



**Too Marker Products Inc.**  
[copic.jp/en](https://copic.jp/en)



※Copyright © 2021 Too Corporation All rights reserved.  
 ※The information in this manual is as of Jan 2021. It may change without prior notice for various reasons.  
 ※As a manufacturer we have responsibility in the quality of the product that we produce. If a manufacturing defect is found, we will be happy to replace your product.  
 ※This catalog is for domestic use. Indicated prices are applicable within Japan only.



# COPIC sketch

The Good Design Long Life Design Award winning product

## [358 colors]

Copic Sketch is the most popular among all the Copic markers. It comes in the widest range of colors, and features Medium Broad and flexible Super Brush nib combination. Ideal for illustration use.



358 colors (including #0 Colorless Blender)

+Copic Sketch empty marker

- Alcohol based ink
- Medium Broad nib and Super Brush nib
- Oval barrel
- Nib options are available
- Refillable
- Compatible with Copic Airbrush System

For design/illustrations/manga/painting/craft/ educational use Recommended for professionals/enthusiasts

### Copic Sketch Manga Illustration 24 Colors

This well-balanced 24 colors set contains basic colors and colors useful for blending. Highly recommended for beginners of comic illustrations.

G03	YR15	E84	B04	BV13	N-6
R17	YR01	Y18	BG53	B63	N-4
R43	R000	Y04	BG000	BV000	N-2
RV52	R0000	Y000	B41	BV0000	BV20

Includes:  
 \* Coloring Guide  
 \* Line art for coloring practice  
 In the Coloring Guide, acclaimed illustrator Babiry reveals a handful tips and ideas so that you can learn all the basic technique for comic illustrations.



G17	B14	B29	B39	E09	100	V09	RV11	R08	YR04	Y13	YG03	<b>Copic Sketch 12 Colors Set</b>
C-00	C-0	C-1	C-2	C-3	C-4	C-5	C-6	C-7	C-8	C-9	C-10	<b>Copic Sketch 12 Colors Set CG</b>
W-00	W-0	W-1	W-2	W-3	W-4	W-5	W-6	W-7	W-8	W-9	W-10	<b>Copic Sketch 12 Colors Set WG</b>

V09	RV11	RV29	R02	R08	YR04	YR24	Y11	Y13	Y15	YG03	G07	<b>Copic Sketch 36 Colors Set A</b>
G17	G21	G28	B05	B06	B14	B29	B32	B39	E09	E29	E33	Includes the basic colors commonly-used in the field of design. If you want to color portraits and manga characters you will need to get some additional colors.
C-1	C-3	C-5	C-7	C-9	W-1	W-3	W-5	W-7	W-9	100	110	

BV08	V04	V06	V09	RV04	RV09	RV11	RV19	RV29	R02	R08	R27	<b>Copic Sketch 72 Colors Set A</b>
R32	R37	YR00	YR04	YR07	YR09	YR14	YR23	YR24	Y02	Y06	Y11	Includes the basic colors commonly-used in the field of design. These vivid colors have broad utility – Most of all, this set is ideal for use in illustration. If you want to color portraits and manga characters you will need to get some additional colors.
Y13	Y15	Y21	Y26	YG03	YG13	YG91	YG95	G07	G16	G17	G21	
G28	G99	BG09	BG10	BG15	BG18	B01	B05	B06	B14	B23	B26	
B29	B32	B34	B37	B39	E09	E15	E29	E33	E37	E44	E49	
C-1	C-3	C-5	C-7	C-9	W-1	W-3	W-5	W-7	W-9	100	110	

BV00	BV04	BV23	BV31	V12	V15	V17	RV06	RV21	RV34	R20	R24	<b>Copic Sketch 72 Colors Set B</b>
R29	R39	R59	YR02	Y00	Y08	Y17	YG07	YG11	YG17	YG41	YG67	A well-balanced set from every color family. Very useful for coloring the portraits or manga characters since this set includes a variety of "earth colors".
G00	G02	G05	G12	G14	G29	G85	BG02	BG11	BG13	BG32	BG45	
BG49	B00	B02	B12	B18	B21	B24	B41	B45	E00	E02	E04	
E07	E11	E13	E21	E31	E35	E39	E40	E41	E43	E51	E57	
C-0	C-2	C-4	C-6	C-8	C-10	N-1	N-3	N-5	N-7	N-9	0	

RV02	RV10	RV13	RV14	RV17	RV25	RV32	R00	R05	R11	R17	R35	<b>Copic Sketch 72 Colors Set C</b>
YR16	YR18	YR21	Y19	Y23	Y38	YG01	YG05	YG09	YG21	YG23	YG25	Contains a rich selection of grays. With the color set A, B and C you can cover the all the Copic Classic color lineup (214 colors).
YG45	YG63	YG97	YG99	G09	G19	G20	G24	G40	G82	BG05	BG34	
BG99	B04	B16	E00	E19	E25	E27	E34	E53	E55	E59	E77	
N-0	N-2	N-4	N-6	N-8	N-10	T-0	T-1	T-2	T-3	T-4	T-5	
T-6	T-7	T-8	T-9	T-10	W-0	W-2	W-4	W-6	W-8	W-10	100	

BV000	BV02	BV11	BV13	BV17	BV20	BV25	BV29	V01	V05	V91	V95	<b>Copic Sketch 72 Colors Set D</b>
V99	RV23	RV42	R000	R12	R14	R22	R30	R43	R46	YR000	YR20	This set includes a variety of natural/muddy colors commonly-used in illustration. Using light colors from the 000 blending group will extend your range of expression.
YR31	YR61	YR65	YR68	Y04	Y28	Y32	Y35	YG00	YG06	YG93	G94	
BG01	BG07	BG23	BG93	BG96	B000	B28	B52	B60	B63	B79	B91	
B93	B95	B97	B99	E000	E01	E08	E47	E50	E71	E74	E79	
E93	E95	E97	E99	FRV1	FYR1	FY1	FYG1	FV2	FYG2	FBG2	FB2	

BV0000	BV01	BV34	V0000	V000	V20	V22	V25	V28	V93	RV0000	RV000	<b>Copic Sketch 72 Colors Set E</b>
RV00	RV52	RV55	RV63	RV66	RV69	RV91	RV93	RV95	RV99	R0000	R01	A perfect set for color illustration. Contains a broad range of 000 light colors, wine-colors and natural colors. Highly recommended for crafters too.
R21	R56	R81	R83	R85	R89	YR0000	YR01	YR12	YR15	YR27	YR30	
YR82	Y0000	Y000	Y18	YG0000	YG61	G0000	G000	G03	G43	G46	BG0000	
BG000	BG53	BG57	BG70	BG72	BG75	BG78	BG90	B0000	B66	B69	E0000	
E17	E18	E23	E30	E42	E70	E81	E84	E87	E89	C-00	W-00	

# COPIC ciao

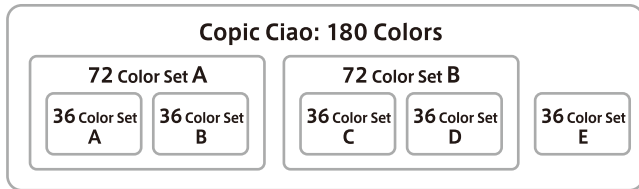
## [180 colors]

Copic Ciao provides the same great quality and experience as Sketch, but at a more attractive price.



180 colors (including #0 Colorless Blender)

- Alcohol based ink
- Medium Broad nib and Super Brush nib
- ※Not compatible with Copic Airbrush System
- Round barrel
- Nib options are available
- Refillable
- Child-safe cap
- For design/illustrations/manga/painting/craft/ educational use
- Recommended for beginners



72 Color Set A is a combination of 36 Color Set A and B.

72 Color Set B is a combination of 36 Color Set C and D.

Complete the assortment of 180 colors of Copic Ciao by combining 36 color set A, B, C, D and E.

### COPIC Ciao 12 color set with the book

This bundle set aimed at beginners contains the Copic Ciao 12 starter set and "12 Colors COPIC ILLUSTRATION for BEGINNERS" guidebook. The book thoroughly explains the basics of character coloring. It is a valuable tool to help you learn how to use Copic markers starting from zero and gradually master your coloring skills. Line arts are included in the set to try out right away.

BV31	RV21	R000	R35
YR31	Y02	BG23	B02
E31	E93	W-2	0

**Set contents:**  
 Copic Ciao 12 starter set  
 "START WITH 12 COLORS!  
 COPIC ILLUSTRATION FOR  
 BEGINNERS" guidebook  
 2 Lineart for coloring



\*You can find the guidebook description on page 19



©chadarumi

### Copic Ciao 12 Colors Set

YG06	G17	BG09	B29	E29	100	BV08	V09	RV04	R29	YR07	Y06
------	-----	------	-----	-----	-----	------	-----	------	-----	------	-----

### Copic Ciao 24 Colors Set

BV00	BV02	RV02	R20	R29	YR02	YR07	Y00	Y06	YG03	YG06	G00
G05	BG09	BG23	B00	B24	B29	E00	E21	E29	E37	C-3	100

A well-balanced 24 colors set for the beginner of illustrations with Copic markers.

### Copic Ciao 36 Colors Set A

BV00	BV02	BV08	V04	V09	V12	RV02	RV04	RV10	R20	R29	R32
YR02	YR07	YR20	Y00	Y06	Y17	YG03	YG06	YG11	G00	G05	G17
BG01	BG09	BG23	B00	B24	B29	E00	E21	E29	E37	C-3	100

This set of vivid colors contains a variety of greens and purples.

### Copic Ciao 36 Colors Set B

BV04	V17	RV21	RV23	RV29	RV42	R02	R27	R59	YR00	YR04	Y02
Y08	YG41	YG67	G02	G21	G99	BG10	BG15	BG93	B05	B23	B32
B39	E02	E04	E08	E33	E35	E47	E51	C-1	C-5	C-7	0

This set has the best collection of soft, warm colors. Recommended for users who want to improve their technique of blending or gradating.

### Copic Ciao 36 Colors Set C

BV13	BV23	BV31	V000	V06	RV000	RV06	RV13	R00	R05	R11	R22
YR16	YR23	YR31	YR61	Y11	Y15	Y21	YG00	YG23	YG63	G000	G07
G14	BG05	BG34	B02	B12	B60	B63	E11	E31	E50	E53	E71

Well-balanced set of light/pale colors which are not included in other 36 Color Sets.

### Copic Ciao 36 Colors Set D

BV17	BV29	V15	V91	V95	RV34	RV95	R17	R35	R37	R46	R85
YR68	Y28	Y38	YG91	YG95	G28	G85	G94	BG49	BG96	B45	B93
B95	B97	E43	E49	E57	E77	E93	E95	W-1	W-3	W-5	W-7

Well-balanced set of dark colors which are not included in other 36 Color Sets.

### Copic Ciao 36 Colors Set E

BV000	BV25	V01	V05	RV14	RV69	R000	R14	R81	YR000	YR15	Y000
Y35	YG09	YG17	G29	G82	BG000	BG13	BG72	B000	B18	B28	B99
E000	E15	E18	E25	E40	E41	E59	E79	C-0	C-2	W-0	W-2

Includes a wide range of neutral colors for experienced users.

### Copic Ciao 72 Colors Set A

BV00	BV02	BV04	BV08	V04	V09	V12	V17	RV02	RV04	RV10	RV21
RV23	RV29	RV42	R02	R20	R27	R29	R32	R59	YR00	YR02	YR04
YR07	YR20	Y00	Y02	Y06	Y08	Y17	YG03	YG06	YG11	YG41	YG67
G00	G02	G05	G17	G21	G99	BG01	BG09	BG10	BG15	BG23	BG93
B00	B05	B23	B24	B29	B32	B39	E00	E02	E04	E08	E21
E29	E33	E35	E37	E47	E51	C-1	C-3	C-5	C-7	0	100

A combination of 36 Color Set A and B. Recommended for everybody from beginners to experts.

### Copic Ciao 72 Colors Set B

BV13	BV17	BV23	BV29	BV31	V000	V06	V15	V91	V95	RV000	RV06
RV13	RV34	RV95	R00	R05	R11	R17	R22	R35	R37	R46	R85
YR16	YR23	YR31	YR61	YR68	Y11	Y15	Y21	Y28	Y38	YG00	YG23
YG63	YG91	YG95	G000	G07	G14	G28	G85	G94	BG05	BG34	BG49
BG96	B02	B12	B45	B60	B63	B93	B95	B97	E11	E31	E43
E49	E50	E53	E57	E71	E77	E93	E95	W-1	W-3	W-5	W-7

A combination of 36 Color Set C and D. Includes a wide range of neutral colors.

# COPIC classic

## [214 colors]

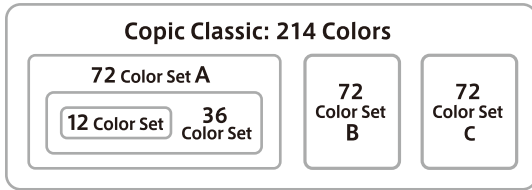
The Good Design Long Life Design Award winning product

Copic Classic is the very first marker of Copic family. For decades, Classic has been favored by professional designers of architecture/product/fashion/interior/etc all around the world.



214 colors (including #0 Colorless Blender)  
+Copic Classic empty marker

- Alcohol based ink
- Broad nib and Fine nib
- Compatible with Copic Airbrushing System
- Square barrel
- Nib options are available
- Refillable
- For design/illustrations/educational use
- Recommended for professionals/enthusiasts



©Testuo Fukuda

V09	RV11	R08	YR04	Y13	YG03	G17	B14	B29	B39	E09	100
-----	------	-----	------	-----	------	-----	-----	-----	-----	-----	-----

### Copic Classic 12 Colors Set

This is a trial set which includes 12 primary colors commonly-used in the field of design.

C-0	C-1	C-2	C-3	C-4	C-5	C-6	C-7	C-8	C-9	C-10	100
-----	-----	-----	-----	-----	-----	-----	-----	-----	-----	------	-----

### Copic Classic 12 Colors Set CG

Includes various Cool Grays, and Black. Commonly used in education field.

N-0	N-1	N-2	N-3	N-4	N-5	N-6	N-7	N-8	N-9	N-10	110
-----	-----	-----	-----	-----	-----	-----	-----	-----	-----	------	-----

### Copic Classic 12 Colors Set NG

Includes various Neutral Grays, and Special Black.

T-0	T-1	T-2	T-3	T-4	T-5	T-6	T-7	T-8	T-9	T-10	0
-----	-----	-----	-----	-----	-----	-----	-----	-----	-----	------	---

### Copic Classic 12 Colors Set TG

Includes various Toner Grays, and Colorless Blender.

W-0	W-1	W-2	W-3	W-4	W-5	W-6	W-7	W-8	W-9	W-10	0
-----	-----	-----	-----	-----	-----	-----	-----	-----	-----	------	---

### Copic Classic 12 Colors Set WG

Includes various Warm Grays, and Colorless Blender.

V09	RV11	RV29	R02	R08	YR04	YR24	Y11	Y13	Y15	YG03	G07
G17	G21	G28	B05	B06	B14	B29	B32	B39	E09	E29	E33
C-1	C-3	C-5	C-7	C-9	W-1	W-3	W-5	W-7	W-9	100	110

### Copic Classic 36 Colors Set

Includes the basic colors commonly-used in the field of design. Acclaimed as one of the best teaching material in art education.

BV08	V06	V09	RV04	RV09	RV11	RV17	RV19	RV29	R02	R08	R27
R32	R37	YR00	YR04	YR07	YR09	YR14	YR18	YR23	YR24	Y06	Y11
Y13	Y15	Y21	Y26	YG03	YG13	YG23	YG91	YG95	YG97	YG99	G07
G17	G21	G28	G99	BG09	BG10	BG15	BG18	B05	B06	B14	B23
B26	B29	B32	B34	B37	B39	E09	E29	E33	E37	E44	C-1
C-3	C-5	C-7	C-9	W-1	W-3	W-5	W-7	W-9	0	100	110

### Copic Classic 72 Colors Set A

Includes the plentiful basic colors which are commonly-used in the field of design. Great choice for starting your Copic experience.

BV00	V04	RV06	RV14	R17	R20	R29	R35	Y00	Y02	Y17	YG01
YG17	G02	G16	G29	BG02	BG05	BG13	BG99	B00	B01	B02	B04
E04	E07	E11	E13	E15	E19	E25	E27	E31	E34	E40	E49
C-0	C-2	C-4	C-6	C-8	C-10	N-0	N-1	N-2	N-3	N-4	N-5
N-6	N-7	N-8	N-9	N-10	T-0	T-1	T-2	T-3	T-4	T-5	T-6
T-7	T-8	T-9	T-10	W-0	W-2	W-4	W-6	W-8	W-10	100	110

### Copic Classic 72 Colors Set B

A well-balanced set which includes a wide variety of primary colors, pale tones and grays.

BV04	BV23	BV31	V12	V15	V17	RV02	RV10	RV13	RV21	RV25	RV32
RV34	R00	R05	R11	R24	R39	R59	YR02	YR16	YR21	Y08	Y19
Y23	Y38	YG05	YG07	YG09	YG11	YG21	YG25	YG41	YG45	YG63	YG67
G00	G05	G09	G12	G14	G19	G20	G24	G40	G82	G85	BG11
BG32	BG34	BG45	BG49	B12	B16	B18	B21	B24	B41	B45	E00
E02	E21	E35	E39	E41	E43	E51	E53	E55	E57	E59	E77

### Copic Classic 72 Colors Set C

Contains a rich selection of neutral colors for the experienced users. Your Copic Classic collection is completed if you use this set in combination with the 72 Color Set A and B.

# COPIC sketch 3/6 colors set

# COPIC ciao 6colors set / Doodle set

## [Copic Sketch Set ]

### ● Copic Sketch 6 colors Set



<b>Sea &amp; Sky</b>					
B24	B28	BG10	BG13	BG72	BG78
<b>Portrait</b>					
E000	E00	E11	E15	E18	E93
<b>Secondary Tones</b>					
G02	G09	V04	V09	YR61	YR68
<b>Bold Primaries</b>					
100	B29	E29	G28	R29	Y15
<b>Perfect Primaries</b>					
B00	B04	R43	R46	Y13	Y19
<b>Pale Pastels</b>					
BG11	BG15	BV0000	BV01	YR12	YR31
<b>Earth Essential</b>					
B41	B45	E34	E39	YG13	YG17
<b>Floral Favorites 1</b>					
R01	RV13	RV69	V05	YG41	YG45
<b>Floral Favorites 2</b>					
B63	B66	RV23	RV25	RV29	YR21

### ● Copic Sketch 5 colors Set + Copic Multiliner SP set



<b>Sketching Grays</b>			<b>Blending Basics</b>		
N-0	N-2	N-4	0	B0000	N-1
N-6	N-8		RV10	Y0000	
Copic Multiliner SP ● Black 0.5mm			Copic Multiliner SP ● Black 0.3mm		

### ● Copic Sketch 3 colors Set



<b>Color Fusion</b>					
1	V20	V22	V25	4	YR20 YR23 YR27
2	RV000	RV52	RV55	5	G40 G43 G46
3	E04	R56	R59	6	B01 B04 B06

## [Copic Ciao Set ]

### ● Copic Ciao 6 colors Set



<b>Bright</b>					
R32	Y06	YG06	B00	B05	V17
<b>Primary</b>					
R37	YR04	Y15	G07	B29	BV08
<b>Pastels</b>					
RV21	V04	Y21	YG11	B23	BG15
<b>Sea</b>					
0	100	C-3	G21	BG72	B93
<b>Portrait</b>					
E000	E00	E11	E15	E18	E93

### ● Doodle Kit

Copic Ciao 5 colors + Copic Multiliner 2 colors set



<b>Nature</b>					<b>Rainbow</b>					<b>People</b>				
B95	BV13	E04	V12	G82	B02	G02	Y00	YR02	R22	E25	E33	E50	RV42	BV000
Copic Multiliner ● Olive ● Wine 0.3mm					Copic Multiliner ● Black ● Cobalt 0,3mm					Copic Multiliner ● Warm Gray ● Brown 0.3mm				

### ● Doodle Pack

Copic Ciao 2 colors + Copic Multiliner + atyouSpica Glitter Pen set

<b>Red</b>		<b>Yellow</b>		<b>Turquoise</b>		<b>Green</b>	
RV29	RV69	Y11	Y17	BG10	BG13	YG41	G14
atyouSpica Glitter ● Black	atyouSpica Glitter ● Buttermilk	atyouSpica Glitter ● Turquoise	atyouSpica Glitter ● Olive	Copic Multiliner ● Black 0.3mm	Copic Multiliner ● Warm Gray 0,3mm	Copic Multiliner ● Cool Gray 0.3mm	Copic Multiliner ● Olive 0.3mm
<b>Blue</b>		<b>Purple</b>		<b>Brown</b>		<b>Pink</b>	
B12	B24	BV00	BV04	E31	E35	R81	RV14
atyouSpica Glitter ● Body Blue	atyouSpica Glitter ● Pink	atyouSpica Glitter ● Chocolate	atyouSpica Glitter ● Blossom	Copic Multiliner ● Cobalt 0.3mm	Copic Multiliner ● Wine 0.3mm	Copic Multiliner ● Brown 0.3mm	Copic Multiliner ● Wine 0.3mm

# COPIC ink NEW

## [358 colors]

All 358 marker colors have a matching ink refill.  
You can also create your custom colors using empty bottle.



Contains: 12ml  
358 colors (including #0 Colorless Blender)  
+Empty bottle

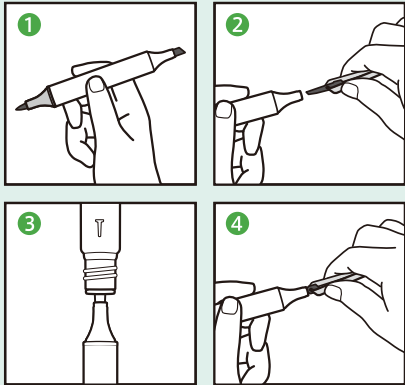


**Copic Colorless Blender (200ml)**  
Economy-size Copic Colorless Blender (No. 0).  
Comes in handy when you create a lighter color and it's also a good tool for cleaning up your markers.  
200ml(c.c.)

### CAUTION

- ⓄCopic Ink is alcohol based and combustible. Keep the product away from high temperatures or direct sunlight.
- ⓄAvoid contact with eyes, mouth and clothing.
- ⓄIf the Copic Ink has entered the eyes, do not rub, and flush with water immediately. Seek medical attention if necessary.
- ⓄPlease be careful when using this product. If you grip the body too tightly, ink may spill out from the nozzle.
- ⓄAlways close the cap after use.

## How to Refill Markers



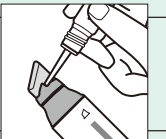
- 1 Uncap both ends of the marker.
- 2 Remove broad nib from the marker.
- 3 Insert the nozzle into the marker body to fill with ink.
- 4 Insert back the nib and the cap.

※Make sure to check the fullness by measuring guides (1cc/1ml per guide) on the bottle every few drops.

※Before refilling your marker, remove the cap of both ends to make ink thoroughly penetrates inner cotton (ink reservoir). Do not overfill the marker with too much ink. Overfilled ink may drip onto your work.

### For Copic Wide:

Hold Copic Wide at an angle, then place the ink nozzle in a notch and drip Copic Ink onto the nib.



	Sketch	Ciao	Classic	Wide
The number of times that one bottle can refill	Approx. 7 times	Approx. 9 times	Approx. 5 times	Approx. 3.5 times
Rough indication amount per refill	Approx. 1.8ml	Approx. 1.4ml	Approx. 2.5ml	Approx. 3.5ml
Amount of ink needed for Copic empty marker	Approx. 3ml	—	Approx. 4ml	Approx. 6ml

### CAUTION

- ⓄCopic Ink is alcohol based and combustible. Keep the product away from high temperatures or direct sunlight.
- ⓄPlease pour ink carefully and pay attention to the markings on the bottle. Do not overfill. It may cause leakage of ink.

## Copic empty marker [3 Types]

These empty markers allow you to expand your collection by using Copic Ink to fill them up, or mix some inks to create your own custom colors.

- Copic Classic empty marker
- Copic Sketch empty marker
- Copic Wide Original (empty marker)

### Copic Wide Original (empty marker)

Copic Wide is the best choice for coloring large areas with a consistent stroke. Ideal for rendering in product design, and drawing architectural perspectives.

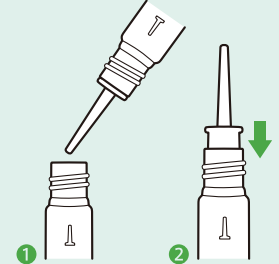
- Extra Broad nib (21mm)
- Nib options are available
- Refillable
- For design/illustrations/educational use

Expand your color collection with Copic Ink and Wide Original (empty marker).



## How to Blend Ink

- 1 Pour the ink you chose into the empty bottle.  
\*The bottle is marked per 1ml.
- 2 Securely insert the nozzle until you hear a clicking sound.  
\*The nozzle should be hard to remove once it is inserted into the bottle.



## Spare Nibs & Optional Nibs

Nibs can be replaced to help the longevity of your markers.

### Spare Nibs for Copic Sketch & Ciao

Exclusive spare nibs for Copic Sketch & Copic Ciao marker.

- Super Brush (3pcs/pack)
- Medium Broad (10pcs/pack)

### Optional Nibs for Copic Sketch

Fits light gray end (Medium Broad nib side) of Copic Sketch.

- Sketch Fine (3pcs/pack)

### Spare Nibs for Copic Wide

- Spare Nibs for Copic Wide Extra Broad (2pcs/pack)

- Tweezer (1pc/pack)

### Spare/Optional Nibs for Copic Classic

You can replace the standard nib for Copic Classic with a variety of Optional nibs according to the intended use. Except for standard (Spare) nibs, identification sticker is included.

- For thick line drawing  
Exclusive replacement nibs for Broad nib  
10pcs/pack  
(Brush type:3pcs/pack)

- For fine line drawing  
Exclusive replacement nibs for Fine nib  
10pcs/pack

- [Standard Broad]  
Spare for standard Broad nib

- [Standard Fine]  
Spare for standard Fine nib

- [Soft Broad]  
Rounded edge delivers smooth touch

- [Super Fine]  
Plastic-made nib provides extra fine line

- [Calligraphy 5mm]  
Ideal for illustrations and decorative lettering

- [Semi Broad]  
Broad-type nib with narrower width

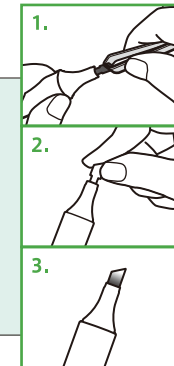
- [Round]  
Provides line variation and smooth touch

- [Calligraphy 3mm]  
Ideal for illustrations and decorative lettering

- [Brush]  
Responsive and flexible brush nib

## Replacing the nib

1. Using the tweezers, pull the nib out of the marker slowly to avoid splash of ink.
2. Carefully insert the new nib.
3. It may take a little time until the ink penetrates the new nib and the color becomes stable.



### CAUTION

- ⓄBe careful not to spill the ink when you pull the nib out of the marker.
- ⓄIf the amount of ink is decreased in inner cotton, the penetration of ink into the new nib will be slower than usual. Refill with the ink in that case.

# Copic Multiliner [10 Colors]

The all-purpose Copic Multiliner inking pen is pigment-based and Copic-proof, meaning that once dry, the ink will not bleed when colored over with Copic markers. Multiliner comes in a variety of colors and pen sizes and it's ideal for illustrations, manga inking or any projects requiring consistent line flow and precision.

Water based pigment ink (becoming waterproof when dry) Acid-free For illustrations/manga inking/sketch/writing use



●Black Pen size : 0.03/0.05/0.1/0.3/0.5/0.8/1.0mm



●Cool Gray Pen size : 0.03/0.05/0.1/0.3/0.5mm



●Warm Gray Pen size : 0.03/0.05/0.1/0.3/0.5mm



●Sepia Pen size : 0.03/0.05/0.1/0.3/0.5mm



●Brown Pen size : 0.03/0.05/0.1/0.3/0.5mm



●Wine Pen size : 0.05/0.1/0.3/0.5mm



●Cobalt Pen size : 0.05/0.1/0.3/0.5mm



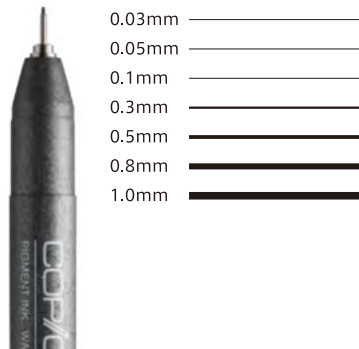
●Olive Pen size : 0.05/0.1/0.3/0.5mm



●Pink Pen size : 0.03/0.05/0.1/0.3/0.5mm



●Lavender Pen size : 0.03/0.05/0.1/0.3/0.5mm



### [Multiliner set]

- Black A-2 Set (7 pen sizes)
- Black B-2 Set (7 pen sizes + 2 brush pens)



### [Multiliner 4pcs Set]

- Black A-2 Set (0.03/0.05/0.1/0.3)
  - Black B-2 Set (0.5/0.8/BS/BM)
  - Cool Gray ●Warm Gray ●Sepia
  - Brown ●Pink ●Lavender
- Pen size: 0.05/0.1/0.3/0.5mm

- 4 Colors Set
- Pen size: all 0.3mm
- Sepia/Wine/Cobalt/Olive



### [Brush type]

BS (brush pen for fine line) BM (brush pen for thick line)



●Black ●Sepia



### [Copic Multiliner CS and CM]

The new Copic Multiliner specially developed for calligraphy/card making purposes. Ink does not blur on the paper and offers a wide range of representation from sharp fine lines to blurred wide lines.



©Makiko Odawara

CS: Calligraphy S Ideal for intricate, detailed expressions.  
CM: Calligraphy M The most used linewidths in calligraphy.

●Color: Black



●Copic Multiliner Calligraphy 2pcs Set (CS/CM)

### Line Widths of Copic Multiliner

	0.03	0.05	0.1	0.3	0.5	0.8	1.0	BS	BM	CS	CM
Black	●	●	●	●	●	●	●	●	●	●	●
Cool Gray	●	●	●	●	●	—	—	—	—	—	—
Warm Gray	●	●	●	●	●	—	—	—	—	—	—
Sepia	●	●	●	●	●	—	—	●	●	—	—
Brown	●	●	●	●	●	—	—	—	—	—	—
Wine	—	●	●	●	●	—	—	—	—	—	—
Cobalt	—	●	●	●	●	—	—	—	—	—	—
Olive	—	●	●	●	●	—	—	—	—	—	—
Pink	●	●	●	●	●	—	—	—	—	—	—
Lavender	●	●	●	●	●	—	—	—	—	—	—

### CAUTION

If the Multiliner's ink bleeds when colored over with Copic markers, it's thought that the root cause is insufficient fixation with paper. In that case let the ink dry well then carefully rub off pigment on the surface of paper with an eraser.

### GENERAL CAUTION

- ◎ Do not drop or shake the pens because the ink may leak out.
- ◎ Open the cap carefully to avoid splashing ink.
- ◎ The pen will dry out fast if it is left uncapped. Always recap tightly after use.
- ◎ Do not store in a high temperature. ◎Keep Out of Reach of Children.



# Copic Multiliner SP

Copic Multiliner SP pen is designed to last a lifetime – Its ink cartridge and nib can be replaced as needed. The durable aluminum body feels smooth in your hand, and tips are very sturdy even in smaller pen sizes. This pen contains the same Copic-proof, black pigment ink as Multiliner.

- Water based pigment ink (becoming waterproof when dry) Replacable nib
- Replacable ink cartridge Acid-free
- For rendering/illustrations/manga inking/sketch/writing use



Pen size : 0.03/0.05/0.1/0.2/0.25/0.3/0.35/0.5/0.7mm/BS



Nibs	0.03	0.05	0.1	0.2	0.25	0.3	0.35	0.5	0.7	BS
		2pcs/pack			2pcs/pack			1pc/pack		
Ink	Cartridge A			Cartridge B						
Tool	SP Changer (replacement tool for nib and ink cartridge)									

**CAUTION**

- Do not replace the nib and cartridge on your project.
- Do not insert and remove the nib and cartridge unnecessarily.
- Store the spare ink cartridges horizontally.
- When replacing a nib, make sure the size is the same.

- 0.03mm
- 0.05mm
- 0.1mm
- 0.2mm
- 0.25mm
- 0.3mm
- 0.35mm
- 0.5mm
- 0.7mm



**[Set]**  
 ●Copic Multiliner SP 10A Set (includes all pen sizes)

## How to replace the nibs

- Using a coin:**
    - Place a coin into the groove of metal nib holder and remove the nib with the thumb as illustrated.
  - Using SP Changer:**
    - Place the small end of a SP Changer into the groove of metal nib holder and remove the nib with the thumb as illustrated.
- ※Remove the nib by slowly pushing it with the thumb, in the direction of the arrow. Do not try to remove the nib with the hand holding a SP Changer, otherwise the nib will pop out.
- Insert spare nib. The ink will flow after a while. If the ink does not come out, the nib may not have contacted the ink reservoir properly. Remove the nib and try again.

## How to replace the ink cartridges

- Using a coin:**
  - Place a coin into the groove of ink cartridge's end cap and remove it with the thumb as illustrated. Then replace with new ink cartridge. Push the cartridge straight into the body and you will hear a click.
- Using SP Changer:**
  - Place the large end of a SP Changer into the groove of ink cartridge's end cap and remove it with the thumb as illustrated. Then replace with new ink cartridge. Push the cartridge straight into the body and you will hear a click.

# Copic Gasenfude Brush Pen

Gasenfude brush pen has a flexible synthetic brush nib which creates expressive line variations. It's water based pigment ink is Copic-proof - When the ink dries, it will not bleed when colored over with Copic markers.

- Water based pigment ink (becoming waterproof when dry) Acid-free For illustrations/sketch/card making/writing use



**CAUTION** Do not drop or shake the pen because the ink may leak out. The stains on clothes may not wash off. Always carry with the nib upward.

# Copic Drawing Pen F Series

Copic Drawing Pen is made for those who prefers the feeling of a fountain pen, without the need to worry about the mess of a dipping well. This pen provides a variety of line sizes by simply changing the writing pressure.

- Water based pigment ink (becoming waterproof when dry) Acid-free For manga inking/sketch/writing use



●Black ●Sepia  
 Line width can be adjusted by the pen pressure

**CAUTION**

- Test the pen until the ink flows smoothly.
- Not recommended for use with water colors.

## Care for Copic Drawing Pen

Copic Drawing Pen is a delicate writing instrument. As a fountain pen, special care should be taken when handling Copic Drawing Pen, the super fine F01 model in particular. Use the drawing pen daily, even for a very short time. It contributes to the maintenance of the tip.

Always recap tightly after use. The pen will dry out if it's left uncapped. If the pen is not writing properly, check if the flow channel is clogged with paper fibers. To remove clogged fibers, pull away the tip from the pen and wipe it gently with paper towels. \*Never shake the pen because the ink may leak out.

# PAPER SELECTIONS

When you are coloring with alcohol-based markers, the right paper choice will help your artwork bring out your desired image. Copic Paper Selection help you seek the right paper choice without making you feel lost in an overwhelming number of options.

A4 size (210×297mm)



## ●PM Paper

20 sheets/pack Thickness: 68g/m<sup>2</sup>  
This thin, coated paper is suitable for tracing, inking or traditional marker rendering with colored pencil/pastel accents. Doesn't bleed through. Great for clean, crisp, bold colors.

This high quality paper with smooth texture is great for blending colors.



## ●Premium Bond Paper

20 sheets/pack Thickness: 157g/m<sup>2</sup>  
High-quality paper with super-smooth texture. Slightly off-white in tone. This uncoated, medium weight paper is great for blends and special effects.



## ●Custom Paper

20 sheets/pack Thickness: 150g/m<sup>2</sup>  
High-quality copy paper with super-smooth texture. Excellent color property. Suitable for manga and general illustration. Great for blends and special effects.

Easy to blend, good for gradation effect.



## ●Thick Marker Paper

20 sheets/pack Thickness: 186.7g/m<sup>2</sup>  
Soft, thick, uncoated paper with slightly textured surface. Great for watercolor, pencil, and mixed-media. Easy to blend, good for special effects like feathering technique.



## ●Soft Watercolor Paper

5 sheets/pack Thickness: 100g/m<sup>2</sup>  
This medium weight, coated paper features extra soft fibers for a watercolor look. Doesn't bleed through. Good for soft color expression.

# Drawing papers



※Each PM Pad is slightly larger than the standard size.

## PM Pad White 50 sheets/pad

This long-seller paper pad features non-bleedthrough PM Paper which is extremely versatile and suitable for a variety of mediums such as marker, pastel and pencil. The paper has moderate transparency and good developed colors.

B2/B3/B4/B5  
A2/A3/A4



## Copic Sketchbook Acid-free 30 sheets/book

Copic Sketchbook features a high-quality Premium Bond Paper. This medium weight paper with super-smooth texture is great for color blending and special effects.

Available in two sizes.

**L size** (240×305mm) **S size** (148×185mm)  
**Square** (110×110mm)



## Copic Shikishi Illustration Board Acid-free

Copic Shikishi Illustration Board made from high quality Custom Paper laminated to a hard board backing. Clean white, smooth surface is ideal for coloring with markers and it provides bright coloration and good blendability. Also it's great for inking with pen, and pencil lines are easily erased without damaging paper fibers. 3 sizes are available.

**Large** (273×242mm) **Medium** (212×182mm)  
**Small** (136×120mm)



## PM Copy

Standard size PM Paper for photocopying use. Precisely trimmed to prevent a paper jam or powder blow.

250 sheets/pack  
A3/B4/A4



## Copic Coaster Card

Acid-free 8cards/pack (90×90mm)  
Use this Coaster Card as a unique greeting card or a rounded illustration board! High-quality Premium Bond Paper gives an excellent color definition and a super-smooth surface.



## Copic Postcard

Acid-free 20 sheets/pack Thickness: 195g/m<sup>2</sup>  
(100×148mm)

An extremely-thin film is hiding between the layer of white smooth paper so that the ink does not bleed through to the address side of card.

# COPIC AIRBRUSHING SYSTEM (ABS)

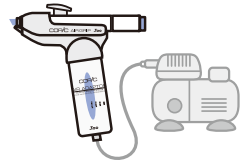


An innovative Copic Airbrushing System (ABS) allows you to easily obtain airbrush effects, and color on a wide variety of surfaces and textures. Simply snap a Sketch or Classic marker into the system and you are ready to go.

Simple airbrushing system ※Copic Ciao cannot be used with ABS.



●Air Can Set  
Includes:  
Air Grip, Air Can 60N



●Air Adaptor Set  
Includes:  
Air Grip, Air Adaptor

※Compressor and air hose are sold separately  
※Air pressure must be maintained around 0.3MPa.  
※To connect with Air Adaptor, use G1/8 (PF1/8) air hose.

[Single parts]



●Air Grip



●Air Can D60N



●Air Adapter

### CAUTION

◎Make a test spray before creating a background. Most colors will look different when airbrushed, and granular feeling changes depending on applied distance and air pressure.

◎For continuous, long term spraying, we recommend using the compressor instead.



### CAUTION

- ◎Use in an area with good air circulation and wear a mask when you work.
- ◎Keep away from open flame.
- ◎To attach Air Grip to Air Can, use the D60.
- ◎Do not spray on people or animals.



## Copic Opaque White

Copic Opaque White has good opacifying properties and provides highlights and details easier than ever. This thick white paint won't bleed into the base color and allows for sharp expression. Great for adding the final touches to your artwork.

※Do not apply colors on top of Opaque White.

●10ml (c.c.) ●6ml (c.c.) with brush



## Copic Color Swatch Cards **NEW**

You can make your own Copic color swatches by filling in the swatch boxes on the Copic Color Swatch Cards with your corresponding Copic markers. It comes in a convenient carrying case.



## Storages



\*Markers are sold separately.

### ●Copic Wallet

Copic Wallet is a great way to keep Copic markers organized. Folds to stand upright or lay flat. All sizes have a zipper pocket for extra storage. All sizes can hold Copic Classic, Sketch and Ciao markers.

for 24/36/72pc

### ●Copic Carrying Pouch

This handy carrying pouch with removable shoulder strap makes transporting your Copic collection easy. Detachable divider and shoulder strap are attached.

Holding up to:  
48pcs of Copic Sketch (50pcs without divider)  
57pcs of Copic Ciao (58pcs without divider)  
34pcs of Copic Classic (35pcs without divider)  
Dimensions: Approx. 120×160mm



\*Markers are sold separately.

### ●Wire Stand

This metal wire stand will help you to organize and display your markers stylishly. It holds up to 72 Classic/Sketch markers.

## Books

### ●START WITH 12 COLORS! COPIC ILLUSTRATION FOR BEGINNERS

Author : Babiry/Too Marker Products  
Publisher : Too Marker Products Inc.  
Spec : A4 size / 68 pages / All Color  
Language : English



This first official guidebook thoroughly covers from the basic techniques to character coloring. This book presents a wide variety of coloring techniques that go well with various genres.

### ●COPIC MANIACS 1 Manga Illustration Coloring & Materials

Author : Toru Terada / Garu Okada  
Publisher : Too Marker Products Inc.  
Spec : A4 size / 48 pages / All Color  
Languages : English, French,  
Italian, Spanish



Learn Copic techniques from basics in the most fun way! In this book, many tips and tricks are disclosed by internationally acclaimed professional illustrators Mr. Toru Terada and Ms. Garu Okada.

## ABOUT COPIC AWARD

Copic Award is an event aiming at providing a competitive platform and opportunity for artists around the world to share their diverse artworks created using Copic products. Our mission is to connect Copic fans to inspire each other by creating art.

## The winners of the COPIC AWARD 2020

### Grand Prize



“silk hat cat”  
by HAMU  
(Japan)

### Second place



“Vielfalt”  
by Hidden Service  
(Germany)

### Second place



“Humedo”  
by Salvador Piuma  
(Argentina)

## 2020 AWARD PRIZES

- **Grand Prize**  
A cash award of \$5,000 USD, invitation to the award ceremony in Tokyo, a full 358 set of Copic Sketch markers.
- **Second place**  
Invitation to the award ceremony in Tokyo, a full 358 set of Copic Sketch markers.

## JUDGES(2020)

Teiya Iwabuchi  
Takeshi Obata  
Yurie Sekiya  
Chisato Tsumori  
Kei Matsushita

## COMING SOON, COPIC AWARD 2021!

### GUIDELINES FOR COPIC AWARD 2021

Entries are accepted between May 10, 2021 - June 30, 2021 (Japan Time)  
Selections from the initial and final screening will be announced between August -September 2021(Japan Time).  
Schedule is subject to change.

### ELIGIBILITY

- Entry must have been created using Copic products.
- No categories, no specific theme.
- Only one piece of artwork may be submitted per person.
- There are no restrictions for nationality, age, experience, or geographic locations.
- Entry must be an original piece that has not already been made public either through another competition or exhibition (excluding personal exhibitions or one's own social media page(s)).
- Any entry infringing on intellectual property rights or copyrights of others will be disqualified.



For more detailed information, Please check the official Copic Award website. The judge members and prizes will be announced soon!

[copicaward.com](http://copicaward.com)



## How to use copic

You can see basic Copic techniques below!

These are also available on our website, which includes video tutorials and more!

### Creating Gradations



Create a first layer with vertical strokes. Start the second layer from the opposite side before the first layer dries.



Before both colors dry, blend the border with the first layer color.

### Colorless Blender



First, apply the color you want to fade. While the ink is still wet, apply Colorless Blender (No.0) over the top.



The Colorless blender ink will be spread in the entire area and the edge part will be faded.

### Change a nib



Grab the old nib with a pair of tweezers, pull the nib down from the marker. Be aware, ink may squirt out after removal of nib.



Slowly insert the new nib into the marker. Wait until the nib fully soaks the ink.

## You can also check out artist interview and making-of videos!



YouTube @COPIC\_Official channel

Follow our social media channels for the latest updates!

Learn everything you need to know about Copic!



@COPIC\_Official

[copic.jp/en](http://copic.jp/en)

Download the line drawing for coloring, watch the artists interview videos, and get the latest information about Copic!